

For more information please contact us at:

Academy on Social and Solidarity Economy

Viale Maestri del Lavoro, 10

10127 Turin, Italy

[socialeconomy@itcilo.org](mailto:socialeconomy@itcilo.org)

[www.itcilo.org/socialeconomy](http://www.itcilo.org/socialeconomy)

<http://www.ilo.org/coop>

Collective Brain of the SSE Academy: <http://www.sseacb.net/>

Meeting Point for South-South and Triangular Cooperation on the SSE: <http://www.sstcsse.net/>

Group SSE Academy on LinkedIn: <http://www.linkedin.com/groups/ILO-SSE-Academy-5105297>

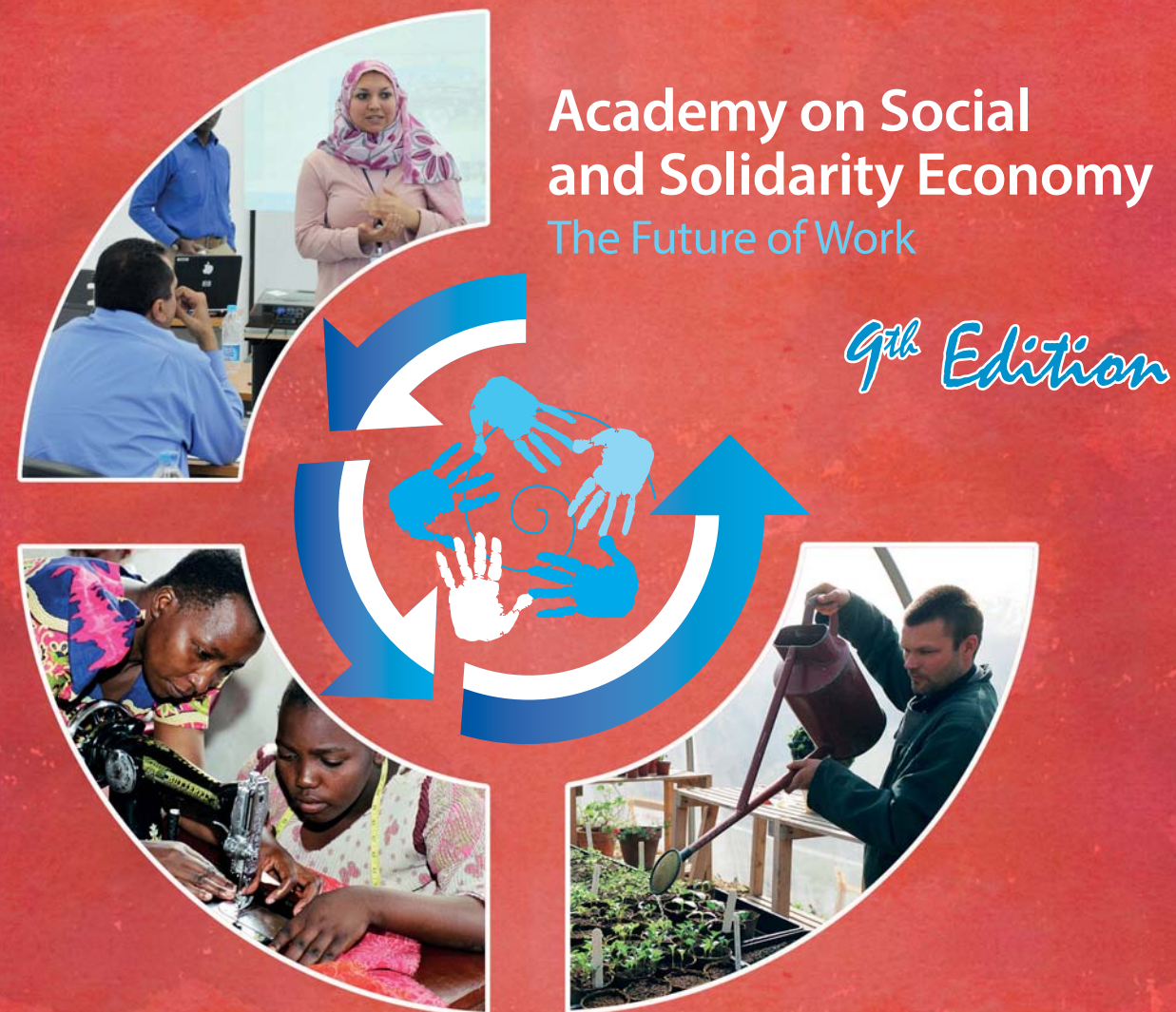
Group SSE Academy on Facebook: <https://www.facebook.com/groups/118163071711976/>

SSE Academy on Twitter: <https://twitter.com/sseacb>.

Group SSE Academy on Google+: <https://plus.google.com/communities/11811884750476528443>

Copyright © International Training Centre of the International Labour Organization, 2017. All rights reserved.  
Design Luca Fiore – Printed by the International Training Centre of the ILO, Turin, Italy

Made of paper awarded the European Union Eco-label,  reg.nr FR/011/002, supplied by International Paper.



A9510700

## Academy on Social and Solidarity Economy: The Future of Work

25 – 29 September 2017  
Luxembourg

hosted by



LE GOUVERNEMENT  
DU GRAND-DUCHÉ DE LUXEMBOURG  
Ministère du Travail, de l'Emploi et  
de l'Économie sociale et solidaire



International Labour Organization

**ULESS**

Union luxembourgeoise de  
l'économie sociale et solidaire



International Training Centre

[www.itcilo.org/socialeconomy](http://www.itcilo.org/socialeconomy)

# Academy on Social and Solidarity Economy: The Future of Work



## Background

The ILO Declaration on Social Justice for a Fair Globalisation (2008) states that “productive, profitable and sustainable enterprises, together with a strong social economy and a viable public sector, are critical to sustainable economic development and employment opportunities”.

Today, the Social and Solidarity Economy (SSE) is a reality in many people’s lives because it promotes values and principles that focus on people’s needs and on their communities. In a spirit of voluntary participation, self-help and self-reliance, and through enterprises and organizations, it seeks to balance economic success with fairness and social justice, from the local level to the global level.

The concept of SSE cuts across all four dimensions of the ILO’s Decent Work Agenda. A high-level capacity building programme on SSE was proposed by more than 200 participants on the occasion of the ILO Regional Conference on Social Economy held in Johannesburg, South Africa, in October 2009.

Since then, eight editions of the Academy were organized by the International Training Centre of the ILO (ITCILO) in Turin (Italy) in 2010, in Montreal (Canada) in 2011, in Agadir (Morocco) in 2013, in Campinas (Brazil) in 2014, in Johannesburg (South Africa) and Puebla (Mexico) in 2015, in San José (Costa Rica) in 2016 and in Seoul (South Korea) in 2017. Known as the “ILO Social and Solidarity Economy Academy (SSE Academy)”, this inter-regional training event has gathered together more than 500 practitioners and policy-makers from around the world, to share their experiences and meet leading SSE specialists.

In its 9th edition, the SSE Academy will have a special focus on the future of work, namely the challenges and opportunities posed by the rapidly changing world of work.

This Academy will be of great contribution to the ILO’s [Future of Work’ centenary initiative](#)



## Objectives

The main objective of the SSE Academy will be to generate a better understanding of the concept of SSE and its possible contribution to the future of work.

At the end of the academy, the participants will:

- Have a better understanding of innovative policies and practices promoting social innovation through the Social and Solidarity Economy with focus on the future of work.
- Have been acquainted with a multitude of social and solidarity experiences, strategies and tools to better face the future challenges and take advantage of the opportunities of a dynamic world of work.
- Have the chance to be part of a growing international network of policy makers and practitioners working on the Social and Solidarity Economy.



## Contents and Learning Methodology

A distance-learning module introducing principles and practices of the SSE will be available for the participants before the face-to-face sessions.

The face-to-face modality of the Academy in Luxembourg will include:

- **Foresight:** On day 1 participants will engage in a *Future of Work Foresight Exercise* to explore and manage change related to the Social and Solidarity Economy, with the objective of identifying emerging changes early and exploring their implications.
- **Plenary Sessions:** Each morning, the programme will offer interactive plenary sessions on a selected topic in order to create a common level of knowledge and understanding among all participants and across the different thematic and policy areas covered by the Academy.
- **Elective Courses:** Participants will be able to choose among elective sessions offering an opportunity to share knowledge, discuss concrete applications of SSE at national and regional levels and draw up lessons for future

research, projects and policy-making.

Dedicated sessions will treat issues of particular concern to trade unions, employers organisations and governments.

- **Study visits:** The participants will have the opportunity of an in-depth knowledge of good practices and initiatives in the field of ESS in Europe.

The following topics will be tackled during the Academy:

- Digitalisation of work
- Circular economy
- The creation of decent work for refugees through the SSE
- The future of work for all
- Training / Education / New skills
- Collaborative & sharing economy
- Innovative experiences in SSE organization incubation and acceleration
- Silver economy



## Who should attend?

The Academy is designed for

- SSE practitioners (leaders and managers of social and solidarity economy organizations).
- Policymakers from different government ministries (labour, social affairs, cooperatives, women’s entrepreneurship, youth).
- Workers and employers’ organizations.
- SSE promoters (UN organizations and development partners, foundations, SSE networks)
- Researchers interested in getting practical insights into the application of Social and Solidarity Economy in different regions.



## Venue and dates

This ninth edition of the ILO Academy on Social and Solidarity Economy will take place from 25 to 29 September 2017 on the premises of Hotel Novotel Luxembourg Kirchberg.  
<http://www.accorhotels.com/gb/hotel-1930-novotel-luxembourg-kirchberg/index.shtml>



## Partners

The main partners of this edition are the *Ministère du Travail, de l'Emploi et de l'Économie sociale et solidaire* of the *Gouvernement du Grand-Duché de Luxembourg*, the Union Luxembourgeoise de l'Économie Sociale et Solidaire (ULESS), the International Labour Organisation (ILO) and the International Training Centre of the ILO (ITCILO).

Other partners are International Centre of Research on Social and Cooperative Economy (CIRIEC), European Economic and Social Committee (EESC), European Research Institute on Cooperative and Social Enterprise (EURICSE) and the Organisation of Economic Cooperation and Development (OECD).



## Languages

This Academy will be offered in English and French. Only some plenary sessions will be translated into Spanish.



## Participation costs

This Academy is donor-funded. A selection committee will identify a limited number of qualified participants based on their online application.

To be admitted in the selection process, the application will need to reach us by 01 September 2017.

Participants will be responsible for organizing and paying for their own travel and visa costs as well as for their accommodation and meals outside of the training hours.



## How to apply

To enrol in the Academy, please register on-line at the address:

<http://intranetp.itcilo.org/STF/A9510700/en>

click on “Apply Now”.

For further information please write directly to us at: [socialeconomy@itcilo.org](mailto:socialeconomy@itcilo.org)

**Deadline for registration: 01 September 2017**