



Spillover effect in Occupied Palestinian Territory



SPOTLIGHT!

In the Occupied Palestinian Territory, a strategic partnership with the Ministry of Education, led to the identification of over 800 kindergartens previously unknown to the labour inspectorate, allowing them to reach 4,089 workers, versus the approximately 300 they would have reached using only their internal enterprise list.

Indonesia
Spillover effect in Indonesia



SPOTLIGHT!

In Indonesia, through strategic targeting of influential economic units, a mere 5 inspections achieved a spill over effect in one palm oil region, leading to 10,000 workers registered in the social security system.

Ivory Coast

The SCP journey is just beginning.

In progress



Zambia

50% +



Colombia

11 out of every 100 workers contacted through mobile inspection units in former conflict zones were formalized with written contracts and registration in the social security system.

SPOTLIGHT!

In Colombia, the labour inspectorate formalized the contracts of 236 workers previously labouring under illegal subcontracting arrangements.

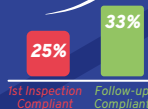
Botswana

8% +



Eswatini

8% +



Tanzania

75% +



Madagascar

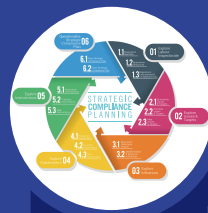
70% +



SPOTLIGHT!

In Madagascar, the labour inspectorate convinced employers to create new bipartite OSH committees, not currently required under law, in 56% of the economic units targeted.

	Targeted Sector	Targeted Issue	Workers Benefitted
Botswana	Security	Wages / Social protection contributions	277
Colombia	Palm Oil / Ports	Informality / Disguised employment relationships	236
Eswatini	Security	Wages / Social protection contributions	2,229
Indonesia	Palm Oil	Social protection contributions	10,000
Ivory Coast	Cocoa	OSH / Child labour	154
Madagascar	Textiles	OSH / Covid	63,900
Occupied Palestinian Territory	Kindergartens	Wages / Hours / OSH	4,089
Tanzania	Construction / Transportation	Written contracts	3,414
Zambia	Security	Wages	23,791



Data Collection Stories of Change 2020 - 2021

9 Participating countries

108,090 Workers benefitted

52 Stakeholders engaged

39% + Change in Compliance
29% Baseline 68% Subsequent

SCP Portal

LABADMIN/OSH launched the Strategic Compliance Portal (SCP Portal) – a web-based channel for the collaborative design and implementation of Strategic Compliance Plans.

Find out more about Strategic Compliance Planning [here](#).

